



CLIMATE CONTROL SYSTEMS / RECREATIONAL VEHICLES

# UNLIMITED COMFORT FOR COMPLETE INDEPENDENCE

Auxiliary heaters and cooling systems

## THE PERFECT TEMPERATURE, EVERY TIME

**Being on the road in your motor home means enjoying nature and freedom: driving wherever you want, staying wherever you want, and hitting the road whenever you want. Be it summer or winter, no one wants the weather or the seasons dictating their itinerary.**

With an Eberspaecher auxiliary heater or climate control device, you can satisfy your wanderlust all year round. You can rest assured that it runs efficiently and quietly, courtesy of our state-of-the-art technology. What's more, using a fuel operated heater helps to reduce your propane consumption - so there's nothing holding you back!



# COMPLETE INDEPENDENCE SOLUTIONS FOR HEATING AND COOLING

**Whether you're traveling to Alaska or the Rocky Mountains, Eberspaecher is your go-to partner for solutions to keep the temperature in your trusty motor home just right. Thanks to our extensive expertise in climate control systems, we can offer our customers tailored solutions for all their heating and cooling needs, alongside the perfect control units for easy and convenient operation. As a one-stop shop, we are proud to be provide our solutions from a single source.**

Our products range from highly efficient air heaters for creating the perfect temperature in no time, water heaters for mist-free wrap-around windshields or for warm tap water when used with a boiler, to a broad selection of sophisticated accessories and cutting-edge control units for your new auxiliary heater. Our cooling system is also a real winner: it uses very little electricity and runs quietly. With climate control taken care of, you can sit back and enjoy your vacation.

## SAVE PROPANE WHILE BOOSTING YOUR VACATION BLISS

The advantages of an Eberspaecher fuel operated heater compared with a propane heater really do speak for themselves. Propane heating uses about 80% of the propane reserves on winter camping trips, meaning you either have to transport a substantial supply of propane cylinders along with you or take on the hassle of constantly finding new cylinders and the right adapters – no mean feat when you are abroad. A diesel or gasoline operated heater gets rid of all that stress as it runs off the motor home's large fuel tank – and very efficiently at that. This means you will need propane only for cooking and to operate the refrigerator.

### ADVANTAGES:

- Uses fuel from the motor home's large fuel tank
- Fuel is conveniently available at service stations around the world
- Time-consuming task of finding and changing propane cylinders reduced to a minimum
- Fewer propane cylinders frees up load capacity and storage space
- Does not eat into the propane supply for cooking and for the refrigerator



CONTROL UNIT



AIR OUTLETS



STATIONARY COOLING SYSTEM



WATER HEATER



AIR HEATER



BLOWER HEATER



WATER HEATER



HIGH-VOLTAGE WATER HEATER\*



FUEL OPERATED HEATERS



ELECTRICAL HEATERS

\* Only available to manufacturers. Retrofitting not currently possible.



AIR CONDITIONERS



CONTROL UNITS AND ACCESSORIES



# EBERSPAECHER AIRTRONIC AIR HEATERS

If you want a rapid, convenient solution to make the interior of your motor home toasty warm, then look no further than the Eberspaecher Airtronic air heater. The Airtronic can quickly heat up your interior to the exact temperature you desire because it works by heating only the air. And because it is extremely efficient and quiet, using it for long periods or at night is no problem.

## AIR HEATER ADVANTAGES:

- Power setting for extremely fast interior heating
- Direct heat and efficient operation: unlike in a combination heater, the tap water is not heated along with the air, ensuring very high efficiency
- Extremely low fuel and electricity consumption
- Automatic interior temperature control with temperature pre-setting
- Prevents condensation from forming and clears icy or foggy windows
- Space-saving installation either underfloor, in a false floor, in a seat base or storage compartment
- Fuel is supplied from the vehicle's tank



\* depending on the version

# EBERSPAECHER AIRTRONIC

THE RIGHT AIR HEATER FOR EVERY NEED

## AIRTRONIC HEATER



- Auxiliary heater with max. 2.2 kW heating performance
- Very small dimensions, ideal for tight installation spaces (will even fit under the seat structure)
- Also suitable as a supplementary heater for the front area

AIRTRONIC	S2 Commercial		M2 Commercial		M2 Recreational*	
	Diesel		Diesel	Gasoline	Diesel	
Version	D2L		D4L		B4L	D4R
Voltage	V	12	24	12	24	12
Heating performance control	Stepless					
Service life	h	5,000				
Heating performance	kW	0.9 to 2.2		0.9 to 4.0		1.3 to 3.8
Heating-air throughput	kg/h	105 (Ø 75 mm)		185 (Ø 90 mm)		190 (Ø 90 mm)
Guide number**		Ø 60 mm: 6 Ø 75 mm: 12		Ø 75 mm: 3 Ø 90 mm: 10		Ø 75 mm: 8 Ø 90 mm: 15
Electrical power consumption	W	34		40		55
Fuel consumption	l/h	0.28		0.51		0.54
Heater operating temperature	°C	-40 to +70		-40 to +70		-40 to +50
Weight	kg	2.7		4.5		
Main dimensions L x W x H	mm	310 x 115 x 122		371 x 140 x 150		
Protection rating***	Heater: IP5K6K, IP5K9K					
Interfaces	CAN, LIN (only 12 V), S+					
Part number	25.2721.05.0000	25.2726.05.0000	25.2720.05.0000	25.2729.05.0000	20.1987.05.0000	25.2746.05.0000

\* Use in campers/RVs, boats and ambulances, for example. For long, complex heating-air ducting, e.g. when many metres of heating-air hose must be laid.

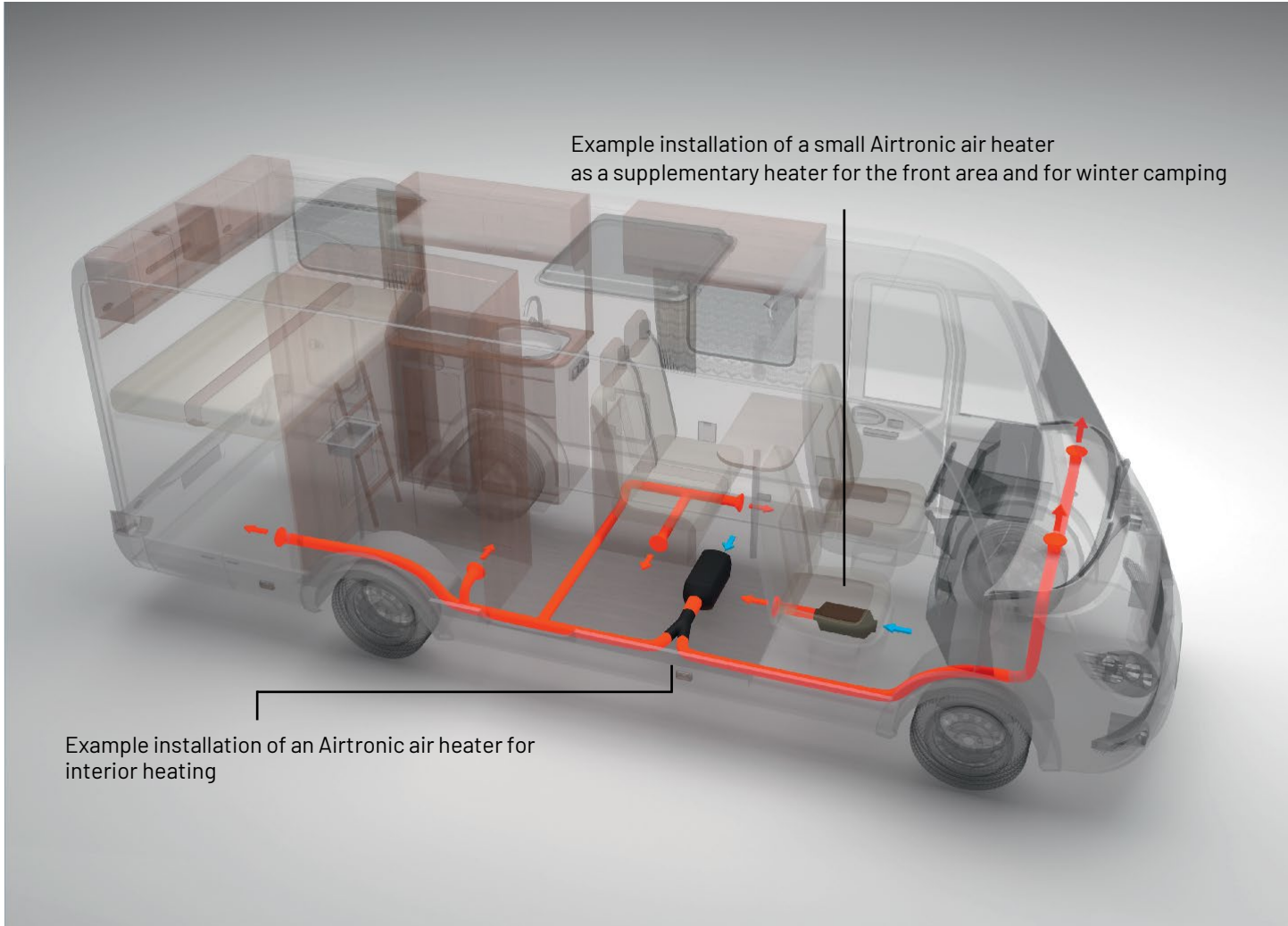
\*\* Each component of the heating-air ducting (air hose, curved sections, vents, etc.) has a line guide number. The sum of these line guide numbers must not be greater than the guide number for the heater.

The higher the guide number for the heater, the more heating-air ducting components may be connected.

\*\*\* The heater is protected against dust in harmful quantities, against powerful water jets under increased pressure and against water during high-pressure/steam jet cleaning (provided it is not in operation).



# AIRTRONIC HEATER INSTALLATION EXAMPLE





# EBERSPAECHER HYDRONIC WATER HEATERS

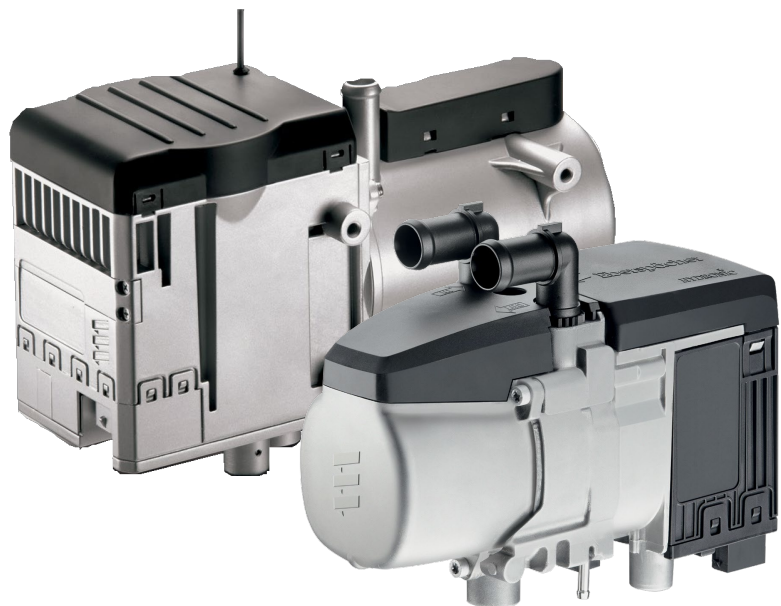
The Eberspaecher Hydronic water heater is a genuine all-rounder. It can be easily integrated into the engine's existing coolant circuit, takes up minimal space and can be used as a supplementary heater for the front area and for pre-heating the engine or as a stand-alone solution for heating the interior. When used in combination with a boiler, the Hydronic also lets you heat your tap water – whether for washing up in the kitchen or for a long, hot shower after a hike in the snow.

## WATER HEATER ADVANTAGES:

- Extremely high heating performance up to 12 kW
- Two-fold benefit of heated interior plus pre-heated engine: starting is more gentle on the engine, uses less fuel, and is environmentally friendly
- Can be used to heat tap water in combination with a boiler
- Quickly clears icy windshield or steamed-up windows on the inside
- Runs quietly

## ADDITIONAL FEATURES:

- Heat distribution via the vehicle's air ducts or convector
- Low fuel and electricity consumption
- Fuel is supplied from the vehicle's tank
- Reduces propane consumption
- Available as diesel or gasoline models
- Option for space-saving installation in the engine compartment
- Can be operated at high altitudes



# EBERSPAECHER HYDRONIC

THE IDEAL CHOICE AS A FRONT OR MAIN HEATER

## HYDRONIC S3 ECONOMY



- State-of-the-art heater that simultaneously heats the engine and front area
- Manual high altitude operation over 1,500 m with the EasyStart Pro control unit
- Can be retrofitted as a supplementary heater for the front area and for pre-heating the engine

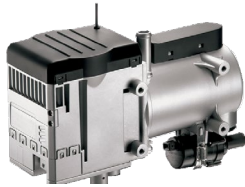
Version		Hydronic S3 Economy*	Hydronic S3 Economy*	Hydronic S3 Economy*	Hydronic S3 Economy*
Model (fuel)		D4E (diesel)**	D5E (diesel)**	B4E (gasoline)	B5E (gasoline)
Voltage	V	12			
Heating performance	kW	1.3 to 4.3	1.3 to 5.0	1.8 to 4.3	1.8 to 5.0
Power consumption, heater	w	5 to 27	5 to 32	7 to 24	7 to 32
Power consumption, water pump	W	18			
Fuel consumption	l/h	0.53	0.59	0.57	0.67
Dimensions L x W x H	mm	215 x 91 x 124			
Weight empty	kg	2.0			

\* For mains operation (230 V/50 Hz), e.g. in camping or parking areas, installation must be carried out with the special cable harness (item no.: 25 2652 82 1100). The cable harness is included in the universal installation kit for recreational vehicles and boats (item no.: 25 2652 82 00 00).

\*\* Also available as a Hydronic S3 Commercial 24 V diesel version. Please see our website for more details.



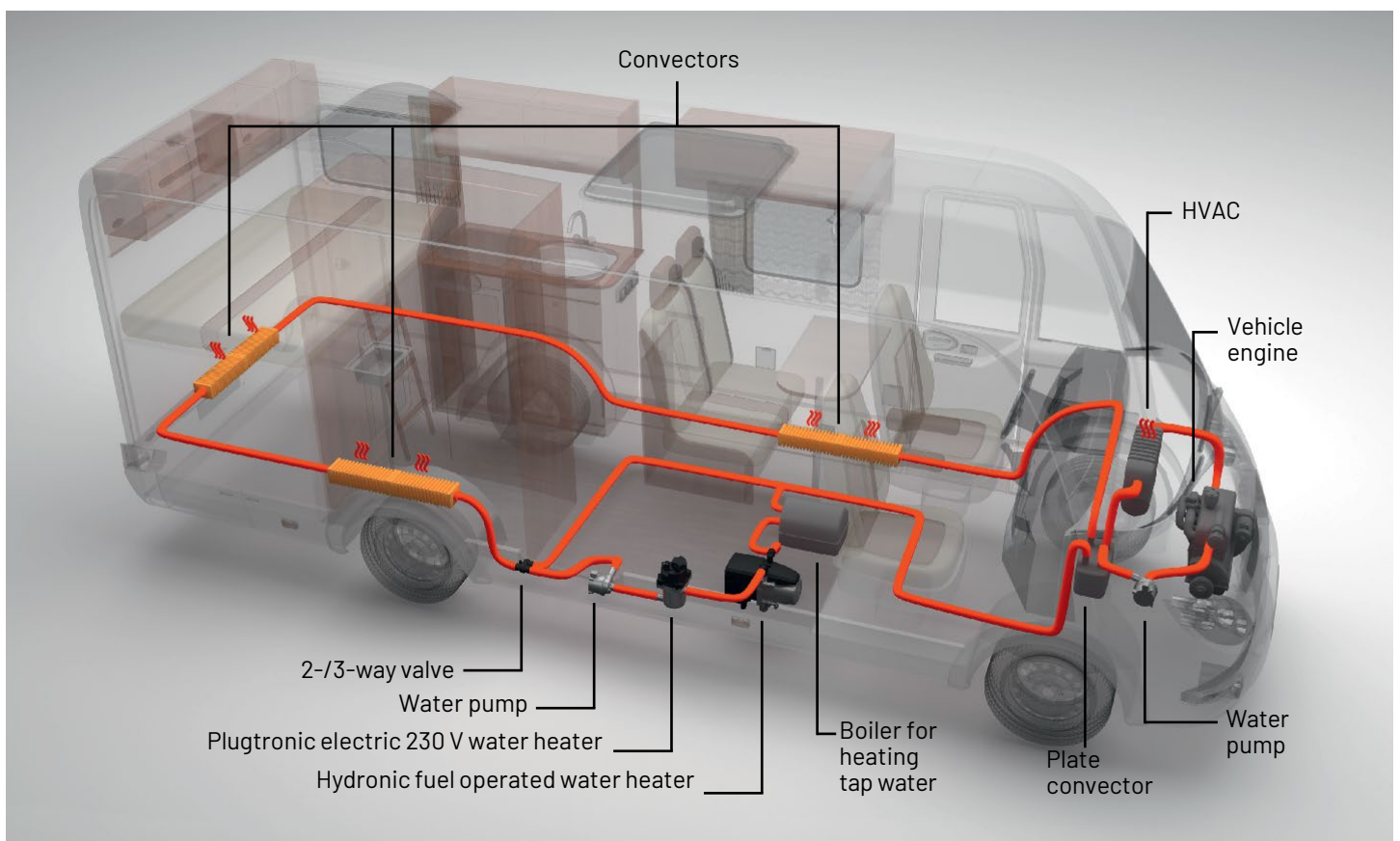
## HYDRONIC M



- Available in three models between 8 and 12 kW heating performance (M8/M10/M12)
- Very long service life (6,000 h)
- Standard altitude capability up to 3,500 m (M10/M12)

Diesel version		Hydronic M8*	Hydronic M10	Hydronic M12
Voltage	V		12 / 24	
Heating performance	kW	1.5 / 3.5 / 5.0 / 8.0	1.5 / 3.5 / 8.0 / 9.5	1.2 / 1.5 / 3.5 / 5.0 / 9.5 / 12.0
Power consumption, heater	W	35 / 39 / 46 / 55	35 / 39 / 60 / 86	34 / 35 / 39 / 46 / 86 / 132
Power consumption, water pump	w	29		
Fuel consumption	l/h	0.18 / 0.40 / 0.65 / 0.90	0.18 / 0.40 / 0.90 / 1.20	0.15 / 0.18 / 0.40 / 0.65 / 1.20 / 1.50
Dimensions L x W x H	mm	331 x 138 x 221		
Weight	kg	6.2		

\* 100% biodiesel-compatible in accordance with FAME DIN EN 14214



Example installation of a Hydronic water heater in combination with an electric heater

# CONTROL UNITS FOR AIRTRONIC AND HYDRONIC

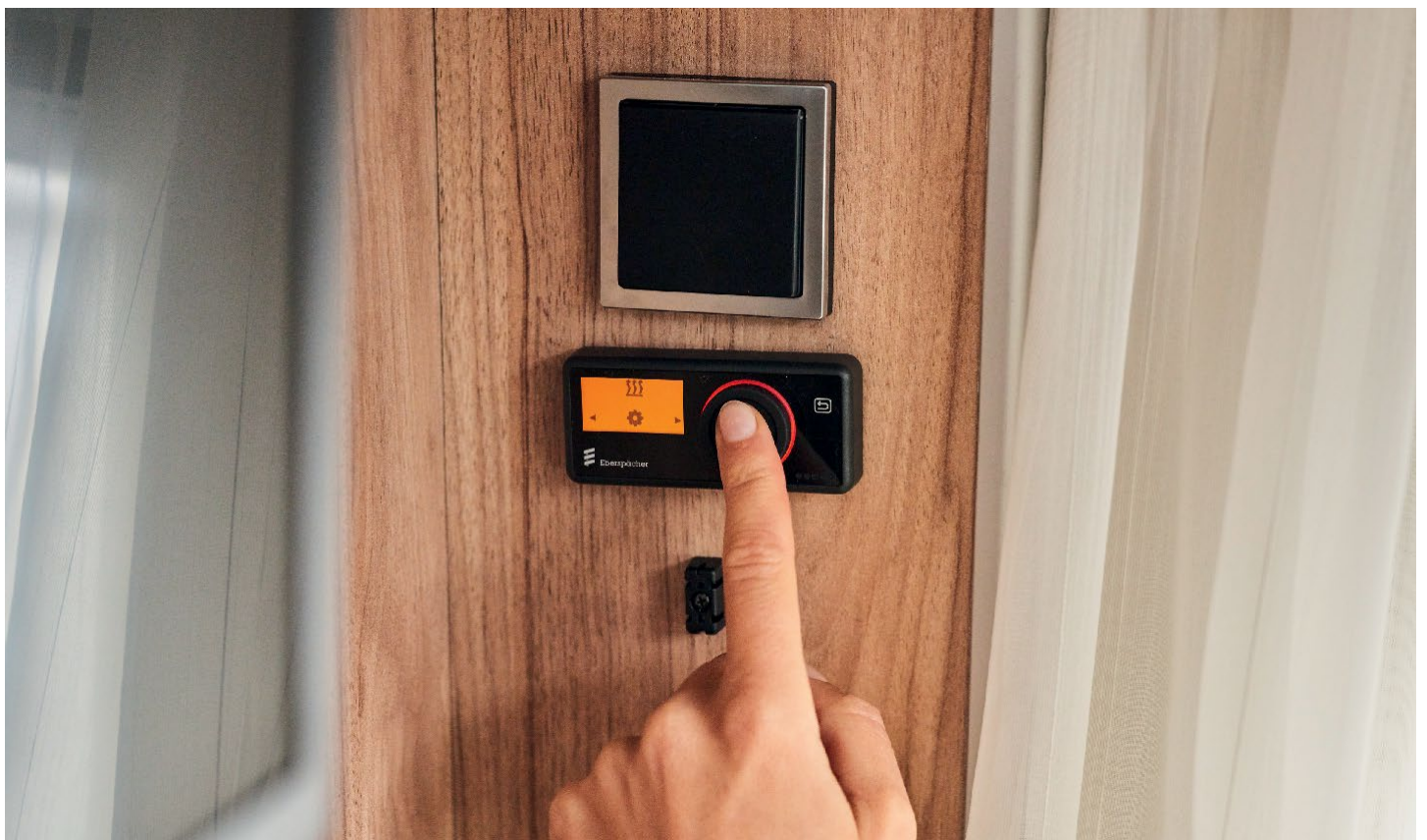
With our modern EasyStart control units, you can easily enjoy the comfort of your auxiliary heater in no time. They check all the right boxes for even the most discerning of motor home owners: they are intuitive to operate and boast an attractive design and high-quality workmanship. You can choose between a built-in control unit or a web-based remote control system that can be linked up to many of the devices currently available. The Eberspaecher EasyStart is the modern way to operate heaters.

## EASYSTART PRO



The EasyStart Pro control unit sets the new benchmark for our line of control units. As well as a timer function that allows up to three programming locations to be set, the EasyStart Pro comes with numerous practical features:

- Built-in control unit with integrated temperature sensor
- Operation of up to two heaters separately or two identical heaters (Airtronic or Hydronic) in a group
- Simple plain text diagnostics for users
- Integrated residual heat function for Hydronic heaters: efficient heating using the engine's residual heat



## FEEL FRESH EVEN IN SUMMER

Heating is not our only specialty. Here at Eberspaecher, we can also keep things cool: even in hot weather, our stationary cooling systems provide the ideal temperatures in your motor home interior.

Our climate control products are especially suited to the following requirements and applications:

- Customers looking for a retrofit cooling system that can be easily installed in an existing roof hatch
- Customers who are sensitive to cold drafts, and therefore haven't found a climate control solution for their living area yet
- Independent campers who don't want to rely on a fixed power connection



EBERSPAECHER CLIMATE  
CONTROL SYSTEMS CANADA INC.  
6099A VIPOND DRIVE,  
MISSISSAUGA, ON L5T 2B2 / CANADA

PHONE: (800) 387-4800  
PHONE: (905) 670-0960  
FAX: (905) 670-0728  
[info-na@eberspaecher.com](mailto:info-na@eberspaecher.com)  
[www.eberspaecher-climate.com](http://www.eberspaecher-climate.com)